

More power to THE PONY



Closed course. Professional driver. Do not attempt.

The New 2011 Mustang – Presented by Ford Motor Company

New aluminum engines scream higher, more intense performance – for V6, GT, Shelby GT500.TM The most powerful production models ever. All now armed with six speeds. Unsurpassed efficiency.¹ And quality that tops the charts. Mustang is the “Highest-Ranked Midsize Sporty Car in Initial Quality”² in 2010 – according to J.D. Power and Associates. In a choice of coupe, convertible or glass roof. No excuses: This is the year of your Mustang.

¹EPA-estimated 31 mpg hwy for V6 Coupe with automatic transmission, and 26 mpg hwy for GT with manual transmission. ²The 2010 Ford Mustang received the lowest number of problems per 100 vehicles among midsize sporty cars in the proprietary J.D. Power and Associates 2010 Initial Quality Study.SM Study based on responses from 82,095 new-vehicle owners, measuring 236 models and measures opinions after 90 days of ownership. Proprietary study results are based on experiences and perceptions of owners surveyed in February–May 2010. Your experiences may vary. Visit jdpower.com.

2011

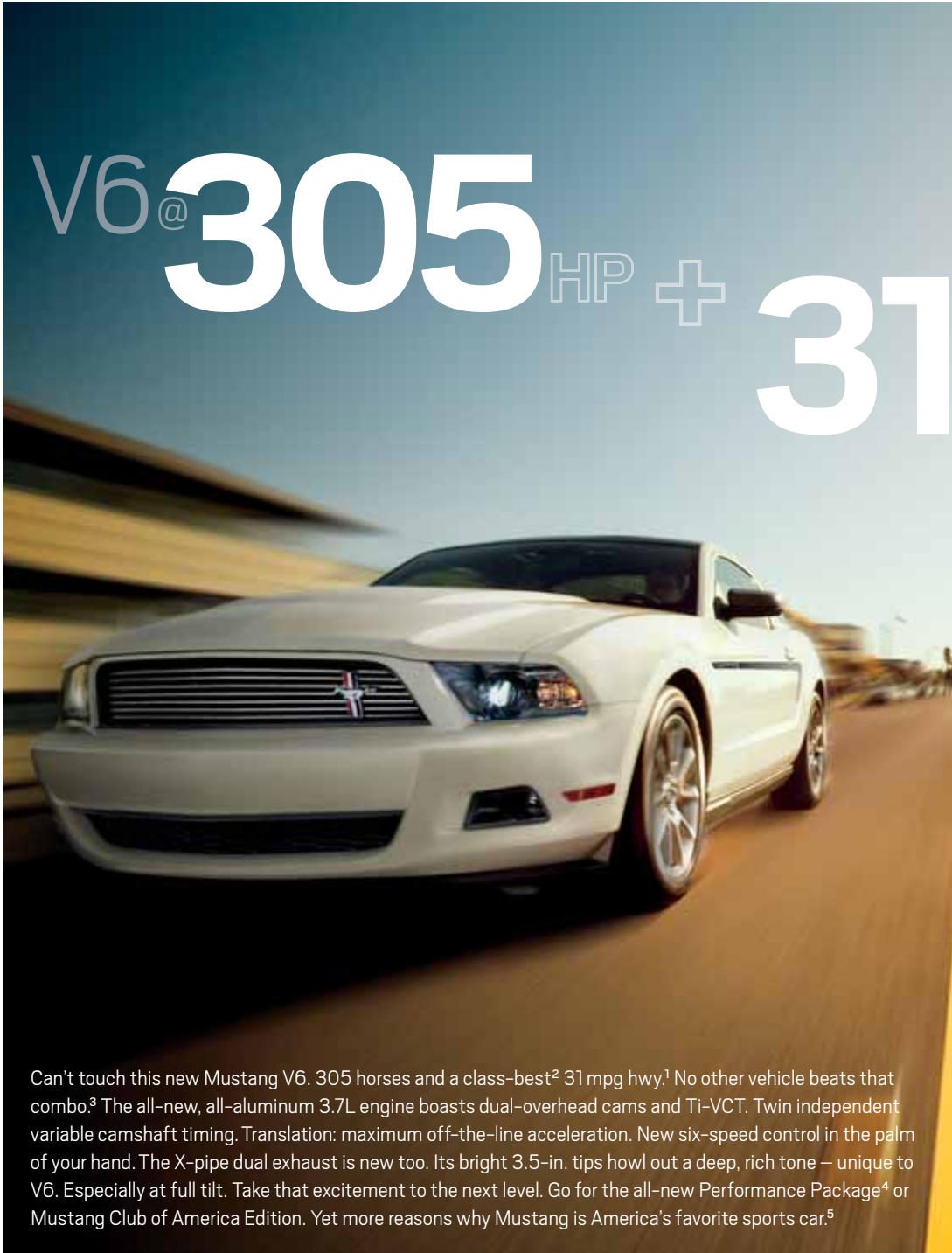
MUSTANG

ford.com



Drive one.

V6@305^{HP} + 31^{mpg'}



Can't touch this new Mustang V6. 305 horses and a class-best² 31 mpg hwy.¹ No other vehicle beats that combo.³ The all-new, all-aluminum 3.7L engine boasts dual-overhead cams and Ti-VCT. Twin independent variable camshaft timing. Translation: maximum off-the-line acceleration. New six-speed control in the palm of your hand. The X-pipe dual exhaust is new too. Its bright 3.5-in. tips howl out a deep, rich tone — unique to V6. Especially at full tilt. Take that excitement to the next level. Go for the all-new Performance Package⁴ or Mustang Club of America Edition. Yet more reasons why Mustang is America's favorite sports car.⁵

The New Mustang V6 and V6 Premium ■ 280 lb.-ft. of torque with plenty of low-end oomph ■ Recalibrated suspension componentry ■ New electronic power-assisted steering ■ Now standard: limited-slip rear axle transfers driving force to rear wheel with most traction ■ All-new Performance Package^{4,6} includes 3.31 gear ratio, aggressive suspension tuning, strut-tower brace, 19-in. premium wheels and summer treads ■ All-new Mustang Club of America Edition⁶ (shown here) with painted dark stainless billet-style grille and 18-in. wheels, unique stripes, fog lamps, rear spoiler and more ■ V6 Pony Package⁶ with bright Pony flanked by satin chrome on grille, fog lamps, 18-in. polished wheels, stripes, rear spoiler and more ■ New fold-down rear head restraints ■ Auto-indexing windows ■ Split-fold rear seat on coupe models

¹EPA-estimated 19 city/31 hwy/23 combined mpg, V6 Coupe with automatic transmission. ²Class is Sports Cars vs. 2010/2011 competitors. ³Versus 2009/2010 models. ⁴Available Summer 2010. ⁵Based on total sales for calendar year 2009. ⁶Available.

2011 MUSTANG

ford.com



The wait is over. Mustang GT pounds pavement with an advanced, all-new take on the 5.0L V8. Mod 5.0 graphics debuted on the hood scoop of a 1978 Mustang II King Cobra. The actual 5.0 badge of honor made its first appearance the following model year. Creating a loyal legion of fans in the process. 1995 models – cresting at 240 hp – were last to flaunt the hi-po 5.0. Until now. Output reverberates with an astounding 412 hp¹ and 390 lb.-ft. of torque.¹ This baby kicks and screams like the day it was born. Only way stronger.

Legendary **THUNDER** RETURNS



The All-New, All-Powerful 5.0L V8 ■ Aluminum cylinder block with optimized bay-to-bay breathing ■ Aluminum, hi-flow four-valve-per-cylinder heads lend volumetric efficiency ■ Torque-actuated Ti-VCT (twin independent variable camshaft timing) adjusts valvetrain intake in microseconds ■ Dual-overhead-cam compact Roller-Finger Followers configured for aggressive cam-lift rates ■ Unique tubular exhaust headers maximize pulse separation ■ Forged-steel crankshaft is fully counterweighted ■ Nodular iron, cross-bolted main bearing caps contain upsized bolts ■ Deep-sump stamped steel oil pan sustains a high-range rpm

¹Figures achieved using premium unleaded fuel.

2011

MUSTANG

ford.com



GT@412HP¹ +390 TORQUE¹

Mustang GT tops any enthusiast's wish list. The all-new 5.0L V8 raises desire tenfold. Especially its pulse-popping, 82-hp-per-liter force.¹ Redline pushed to 7,000 rpm. Speedo bumped to 160 mph. Compression ratio formulated to 11:1. Transmission optimized to six speeds. With the benefit of an unsurpassed 26 mpg hwy.² New handling dynamics include electronic power-assisted steering for optimal all-speed performance. Re-tuned struts and shocks for improved ride and balance.³ Larger-diameter stabilizer bars and brakes for tight cornering.³ GT — for ultimate kicks.



The New Mustang GT and GT Premium ■ Unique front end cheats the wind to help create a low drag coefficient and reduced aerodynamic lift ■ Wide-spoke 18-in. wheels ■ Bright rolled 3.5-in. tips on H-pipe dual exhaust ■ Signature, throaty V8 rumble is specially piped into cabin ■ New rear lower control arms ■ New skip shift for manual transmission ■ Fog lamps housed in grille, on either side of exclusive-to-GT dark-chrome Pony ■ All-new California Special Edition⁴ with chrome billet-style grille, unique lower fascias, exclusive 19-in. wheels, side scoops, GT/CS stripes, pedestal rear spoiler and unique interior accents ■ All-new BremboTM Brake Package⁴ with unique 19-in. wheels and electronic stability control tuning

¹Figures achieved using premium unleaded fuel. ²EPA-estimated 17 city/26 hwy/20 combined mpg. V8 with manual transmission. ³Compared to 2010 Mustang GT. ⁴Available.



2011 MUSTANG

ford.com



Venomous like never before. The added potency of an all-new, cast-aluminum engine block. Plus the optional aggressiveness of an SVT (Special Vehicle Team) Performance Package: unique wheels, tires, stripes, spoiler, shifter and handling. Racing icon Carroll Shelby provided the inspiration. Ford SVT speed gurus fine-tuned this track-ready dream car. Shelby GT500™ is the pride of all who collect it. And the envy of any who chance to dare it.

GT500® @ 550 HP



The Newest Shelby GT500 ■ Intercooled 5.4L four-valve DOHC V8 with a supercharged 9.0 psi of boost ■ 510 lb.-ft. torque ■ 3.55 gear ratio (3.73 available) ■ Shelby thunder courtesy of H-pipe pressure-wave tuning ■ SVT-optimized suspension ■ Goodyear® F1 Supercar 19-in. tires on both coupe and convertible ■ Wheels milled, both sides ■ Heat extractor on unique aluminum hood ■ HID headlamps ■ Brembo™ front rotors and four-piston calipers ■ Unique air splitter up front and strakes in rear ■ Exclusive interior w/3D aluminum panels, racing-stripe shifter, plus Alcantara® leather trim on racing-stripe seats and steering wheel ■ Electronic power-assisted steering ■ Programmable shift indicator ■ Exclusive red, white and blue MyColor® for gauges ■ Le Mans racing stripes on coupe, convertible and glass roof (which is available for the first time)

2011 MUSTANG

ford.com



Mustang Convertible ■ Designed from ground up ■ Front shock-tower crossbrace now standard ■ Z-brace added and V-brace stiffened for greater structural rigidity ■ Low-profile power top Z-folds out of sight ■ Top is weatherproofed outside, tailored inside, sound-deadened in between ■ Cloth top on GT Premium and GT500

Mustang Glass Roof ■ Installed right at the factory ■ Tinted, high-performance safety glass helps keep cabin cool – filtering 96% of ultraviolet rays and 90% of infrared rays ■ Includes a retractable, built-in shade ■ Transparent acoustic layer helps reduce wind and road noise

Twice as BREATHTAKING

Freedom of expression taken to a big-time, baddest extreme. Just the ticket for those who want to see and be seen. Go open-air convertible – where your wind-in-hair passion knows no bounds. Or go four-season glass roof – where even the weather can't spoil your 24/7 thrills. Either version available across the board, in V6, GT or GT500® style. Unparalleled variety. Unbelievably fun.



2011 **MUSTANG**

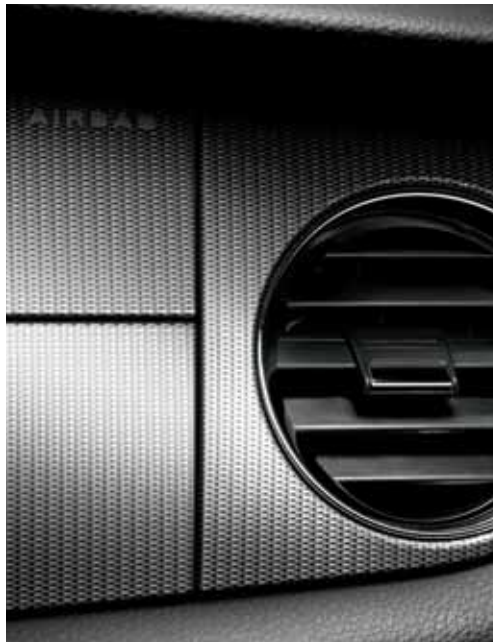
ford.com



Drive one.

Even within,
awe-inspiring

Interior allure rivals that of the jaw-dropping exterior. Craftsmanship is nothing less than phenomenal. Premium materials abound. From the seamless, soft-touch instrument panel to the available, genuine aluminum accents. Driver-variable ambient lighting¹ radiates hi-tech prowess, as does MyColor[®] – with literally 125 combinations of hues – allowing you to customize the full complement of gauges. Mustang at its finest.



Nothing **like it**

11 Class Exclusives

1. Ford SYNC[®]¹
2. Sirius Travel Link[™]¹
3. HD Radio[™]¹
4. Electronic power-assisted steering
5. Ambient lighting¹
6. MyColor¹
7. MyKey[®] owner controls feature
8. Glass roof¹
9. Easy Fuel[®] capless fuel filler
10. Power sideview mirrors w/integrated blind spot mirrors
11. Steering wheel-mounted navigation/phone controls¹

¹Available.

2011 **MUSTANG**

ford.com



Drive one.



MYKEY® owner controls feature is an industry-first. It allows you to assign separate keys to enforce specific driving restrictions — including top speed and audio volume. Especially helpful when it comes to that hot-shot valet.



REAR VIEW CAMERA is an optional help. Shift into reverse — a full-color image from the spoiler-mounted camera appears in your rearview mirror or on the available navigation screen.

SYNC SAY THE WORD

AWARD-WINNING FORD SYNC®¹ works with your paired Bluetooth®-enabled mobile phone and digital media player or USB drive. Delivers hands-free calling. Plays your music. All with the touch of a button and voice commands.² The system also features 911 Assist.TM Personalized traffic reports.³ Turn-by-turn driving directions.³ Business searches. News. Sports. Weather.³ Vehicle Health Reports. And even incoming text messages read aloud.



Special OPS

VOICE-ACTIVATED NAVIGATION SYSTEM¹ WITH SIRIUS TRAVEL LINK^{1,4}

The 8-in. LCD touch screen displays real-time traffic reports. Weather. Lowest fuel prices. Sports scores. And movie listings. Bonus: This system also has nearly 10 GB of storage space for your photos and music (up to 2,400 songs).



SIRIUS® SATELLITE RADIO¹ comes with a six-month introductory subscription.⁵ Surf more than 130 channels — including 100% commercial-free music. Plus the best of sports, news, talk and entertainment, coast-to-coast.

ALL-NEW SIX-SPEED TRANSMISSION

designed for peak performance and efficiency across the powerband. Manual standard. Automatic optional on V6 and GT.

¹Available. ²Driving while distracted can result in loss of vehicle control. Only use mobile phones and other devices, even with voice commands, when it is safe to do so. ³These SYNC services not available with optional Navigation System. Traffic reports available in select markets. See your dealer for details. ⁴Real-time traffic monitoring available in select markets. Some features unavailable while driving. Subscription required after introductory six months expire. ⁵Subscription required after introductory six months expire.

2011 **MUSTANG**

ford.com



Drive one.



RACING

born to race & win



BRANDON DAVIS/ACS EXPRESS RACING MUSTANG
2009 SPEED World Challenge Champion



KEN WILDEN/REHAGEN RACING MUSTANG
2009 KONI Challenge Champion



ANDREW CADDELL/KAUFMANN RACING MUSTANG
2009 Ford Racing Mustang Challenge Champion



VAUGHN GITTIN JR./FALKEN TIRE/FORD RACING MUSTANG
Formula Drift Competitor



BOSS 302R (powered by a modified version of the Mustang GT 5.0L V8) Ford Racing Purpose-Built, Turn-Key Race Car – Available From Your Dealer

Ford Mustang is a thoroughbred in every sense of the word. A storied American icon that's won racing championships since its introduction – defeating both the domestics and exotics along the way. Born to race and bred to win. This competitive spirit is at the core of Mustang, on and off the track.

For those wanting to get even more out of their Mustang, where better to turn than Ford Racing? From performance powertrain calibrations to complete supercharger systems, and handling packs to complete turn-key race cars. Ford Racing is the go-to source for Mustang performance. Buy with confidence: Many packages and parts come with a limited warranty when professionally installed by your Ford Dealer.¹

Ford Racing – true-blue performance parts for your true-blue Mustang.

fordracingparts.com



MORE POWER! V6, GT or GT500,[®] Ford Racing has what it takes to pump Mustang's power output from mild to wild – all with matched components supported by factory-engineered performance calibrations.



MANAGE THE POWER. Put the power to the road through Ford Racing's handling pack and performance-tuned chassis components. With the lowered stance, you'll look good taming corners or simply cruisin'.



WANNA RACE? Ford Racing know-how makes Ford one of a select few vehicle manufacturers that engineers, develops, builds, sells and supports turn-key, race-ready cars – like the 2010 Cobra Jet and Super Cobra Jet.

¹See fordracingparts.com for warranty information and details on all Ford Racing products available for Mustang.

2011 MUSTANG

ford.com



Drive one.

STANDARD FEATURES

Mechanical

4-wheel disc Anti-Lock Brake System (ABS)

All-speed traction control

Coil spring 3-link solid-axle rear suspension

Coil-over strut front suspension

Electronic power-assisted steering

Seating

4-way manually height-adjustable driver's seat

2-way manual front-passenger seat

50/50 split-fold rear seat (coupe only)

Interior

4-gauge instrument cluster with chrome accents

Air conditioning

Premium AM/FM stereo/single-CD audio system

Auxiliary audio input jack

Carpeted front floor mats in Charcoal Black

Cruise control

Cupholders (2)

Full center floor console with armrest and locking storage

Ice Blue™ Lighting

Interior trunk release

Message center

Power door locks

Power windows with one-touch-up/-down feature

Tilt steering column

Exterior

Black rocker moldings

Complex-reflector halogen headlamps

Easy Fuel® capless fuel filler

Rear-window defroster

Sequential light-emitting diode (LED) taillamps

Variable-interval windshield wipers

Safety & Security

Personal Safety System™ with dual-stage front airbags¹

AdvanceTrac® electronic stability control

Belt-Minder® front safety belt reminder

Front-seat side airbags¹

Illuminated Entry System

LATCH – Lower anchors and tether anchors for child-safety seats

MyKey® owner controls feature

Remote Keyless Entry System with integrated keyhead transmitter remotes (2)

Safety belt restraint system – Manual 3-point shoulder and lap safety belt system for all seating positions

SecuriLock® Passive Anti-Theft System

Side-intrusion door beams

SOS Post-Crash Alert System™

Tire Pressure Monitoring System (excludes spare)

2011 EPA-Estimated Fuel Economy

3.7L Ti-VCT V6 engine

Manual transmission 19 city/29 hwy/22 combined mpg

Automatic transmission 19 city/31 hwy²/23 combined mpg

5.0L Ti-VCT V8 engine

Manual transmission 17 city/26 hwy/20 combined mpg

Automatic transmission 18 city/25 hwy/21 combined mpg

5.4L DOHC V8 engine

Manual transmission 15 city/23 hwy/17 combined mpg

Dimensions & Capacities

Exterior

Coupe/Convertible

Wheelbase

107.1"

Length

188.1"

Height

55.8"

Width – Excluding mirrors

73.9"

Width – Including mirrors

80.1"

Interior – Front

Head room

38.5"/38.8"

Shoulder room

55.3"

Hip room

53.4"

Leg room

42.4"

Interior – Rear

Coupe/Convertible

Head room

34.7"/36.5"

Shoulder room

51.6"/45.0"

Hip room

46.8"/45.2"

Leg room

29.8"

Capacities

Passenger volume (cu. ft.)

83.3/81.0

Luggage capacity (cu. ft.)

13.4/9.6

Total interior volume (cu. ft.)

96.7/90.6

Fuel capacity (gal.)

16.0

New Vehicle Limited Warranty. We want your Ford Mustang ownership experience to be the best it can be. So under this warranty, your new vehicle comes with 3-year/36,000-mile bumper-to-bumper coverage, 5-year/60,000-mile Powertrain Warranty coverage, 5-year/50,000-mile safety restraint coverage, and 5-year/unlimited-mile corrosion (perforation) coverage – all with no deductible. Please ask your Ford Dealer for a copy of this limited warranty.

Roadside Assistance. Covers your vehicle for 5 years or 60,000 miles, so you have the security of knowing that help may be only a phone call away should you run out of fuel, lock yourself out of the vehicle or need towing. Your Ford Dealer can provide complete details on all of these advantages.

Ford Credit. Get the ride you want. Whether you plan to lease or finance, you'll find the choices that are right for you at Ford Credit. Ask your Ford Dealer for details or check us out at fordcredit.com.

Ford Extended Service Plan. For a purchase or lease, the Ford Extended Service Plan (ESP) gives you "Peace-of-Mind" protection designed to cover key vehicle components and protect you from the cost of unexpected repairs. Ask your dealer for a Ford ESP, the only service contract backed exclusively by Ford and honored at all Ford Lincoln Mercury dealerships.

Insurance Services. Get Ford Motor Company quality in your auto insurance. Our program offers industry-leading benefits and competitive rates. Call 1-877-367-3847, or visit us at fordvip.com for a no-obligation quote. Insurance offered by American Road Services Company (in CA, American Road Insurance Agency), a licensed agency and subsidiary of Ford Motor Company.

Comparisons based on 2010/2011 competitive models (class is Sports Cars), publicly available information and Ford certification data at release of this PDF. Some features discussed may be optional. Vehicles shown may contain optional equipment. Features shown may be offered only in combination with other options or subject to additional ordering requirements or limitations. Dimensions shown may vary due to optional features and/or production variability. Following release of this PDF, certain changes in standard equipment, options and the like, or product delays may have occurred which would not be included in these pages. Your Ford Dealer is the best source for up-to-date information. Ford Division reserves the right to change product specifications at any time without incurring obligations.

Shelby and GT500 are registered trademarks of Carroll Hall Shelby Trust.

Brembo is a trademark of Brembo S.p.A.

Goodyear is a registered trademark of The Goodyear Tire & Rubber Company.

Alcantara is a registered trademark of Alcantara S.p.A., Italy.

HD Radio is a proprietary trademark of iBiquity Digital Corp.

Microsoft is a registered trademark of Microsoft Corporation.

The Bluetooth word mark is a trademark of the Bluetooth SIG, Inc.

Subscriptions governed by Sirius Terms and Conditions available at sirius.com. Service available in the 48 contiguous United States and D.C. Sirius, XM and all related marks and logos are trademarks of Sirius XM Radio Inc. and its subsidiaries.

¹Always wear your safety belt and secure children in the rear seat. ²Coupe only. 30 mpg hwy for convertible.



V6

Rapid Spec 100A

Includes all standard features, plus:

Mechanical

3.7L Ti-VCT V6 engine with 305 hp @ 6,500 rpm and 280 lb.-ft. of torque @ 4,250 rpm

6-speed manual transmission

2.73:1 gear ratio with limited-slip differential

17-in. painted-aluminum wheels

Front and rear stabilizer bars

Tire mobility kit

Exterior

Black power sideview mirrors with integrated blind spot mirrors

Stainless steel dual exhaust tips

Vinyl top (convertible only)



V6 PREMIUM

Rapid Spec 200A

Includes select V6 features, plus:

Mechanical

17-in. machined-aluminum wheels with painted pockets

Seating

6-way power driver's seat with power lumbar

Leather-trimmed seats

Interior

6-gauge cluster with MyColor® illumination

Ambient lighting

Bright-aluminum instrument panel, pedal covers, door-sill scuff plates and shift knob

Bright-chrome door speaker surrounds

Ford SYNC® voice-activated, in-vehicle communications and entertainment system

Leather-wrapped steering wheel with aluminum spokes

Shaker™ 500 Audio System with AM/FM stereo/single-CD player with MP3 capability, 8 speakers and 500 watts

Sirius Satellite Radio with 6-month introductory subscription

Vinyl door-trim panel inserts



GT

Rapid Spec 300A

Includes all standard features, plus:

Mechanical

5.0L Ti-VCT V8 engine with 412 hp @ 6,500 rpm¹ and 390 lb.-ft. of torque @ 4,250 rpm¹

6-speed manual transmission

3.31:1 gear ratio with limited-slip differential

18-in. wide-spoke painted-aluminum wheels

Compact spare tire

Exterior

Automatic headlamps

Body-color power sideview mirrors with integrated blind spot mirrors

Dark-chrome Pony badge located in grille

Dual bright rolled exhaust tips

Fog lamps

Rear spoiler



GT PREMIUM

Rapid Spec 400A

Includes select GT features, plus:

Seating

6-way power driver's seat with power lumbar

Leather-trimmed seats

Interior

6-gauge cluster with MyColor illumination

Ambient lighting

Bright-aluminum instrument panel, pedal covers, door-sill scuff plates and shift knob

Bright-chrome door speaker surrounds

Leather-wrapped steering wheel with aluminum spokes

Shaker 500 Audio System with AM/FM stereo/single-CD player with MP3 capability, 8 speakers and 500 watts

Sirius Satellite Radio with 6-month introductory subscription

SYNC

Vinyl door-trim panel inserts

Exterior

Cloth top on convertible

Soft boot for convertible top



SHELBY GT500™

Rapid Spec 820A

Includes select GT Premium features, plus:

Mechanical

5.4L DOHC V8 engine with 550 hp @ 6,000 rpm and 510 lb.-ft. of torque @ 4,500 rpm

6-speed manual transmission

9.0 psi boost

3.55:1 gear ratio with limited-slip differential

19-in. x 9.5-in. premium painted-aluminum wheels

Forged-steel crankshaft and connecting rods

Brembo™ 14-in. vented front rotors with 4-piston calipers

11.8-in. vented rear rotors with 2-piston calipers

SVT-tuned suspension with unique shocks and springs

Tuned stainless steel H-pipe exhaust

Seating

Leather-trimmed sport bucket seats with racing stripes and Alcantara® trim

Interior

Leather-wrapped steering wheel with Alcantara trim

Message center with compass

Exterior

GT500® badging

GT500 side rocker stripes

HID headlamps with autolamp

Le Mans racing stripes

Power dome hood with heat extractor

Unique rear spoiler

¹Figures achieved using premium unleaded fuel.

2011 MUSTANG

ford.com



Drive one.

V6



17-in. Painted-Aluminum Wheels
Standard



19-in. Painted Machined-Aluminum Wheels
included with V6 Performance Package



V6/Charcoal Black Cloth



V6/Coupe/Black/Exterior Appearance Package

2011 MUSTANG

ford.com



Drive one.

V6 OPTIONAL FEATURES

Available Rapid Spec

Rapid Spec 101A – **Exterior Appearance Package** includes lower bodyside tape stripes and rear spoiler

Available Options and Packages

3.31:1 gear ratio with limited-slip differential (coupe only)

6-speed automatic transmission

Security Package includes Active Anti-Theft System and wheel locks

V6 Performance Package includes GT Coupe suspension, 3.31 limited-slip differential, unique electronic stability control (ESC) tuning, strut-tower brace, 19-in. painted machined-aluminum wheels and P255/40R19 summer-only tires (coupe manual only)

Exterior Colors	Interior Colors		Top Colors		Stripe Colors	
Grabber Blue		●		▲	◇	◆
Performance White	●	●	▲	▲		◆
Kona Blue Metallic	●	●	▲	▲	◇	◆
Race Red	●	●	▲	▲	◇	◆
Red Candy Metallic Tinted Clearcoat ¹	●	●	▲	▲	◇	◆
Black	●	●	▲	▲	◇	◆
Sterling Gray Metallic	●	●		▲	◇	◆
Ingot Silver Metallic	●	●		▲		◆
Yellow Blaze Metallic Tri-coat ¹		●		▲	◇	◆

Interiors: ● Stone Cloth ● Charcoal Black Cloth **Convertible Tops:** ▲ Stone Vinyl ▲ Black Vinyl
Tape Stripes: ◇ White ◆ Satin Black

MUSTANG V6 BODY STYLES



Coupe

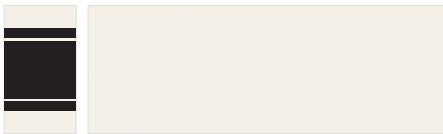


Convertible

EXTERIOR



Grabber Blue



Performance White



Kona Blue Metallic



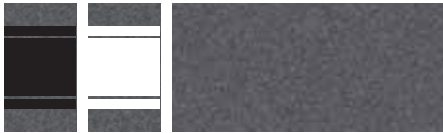
Race Red



Red Candy Metallic Tinted Clearcoat



Black



Sterling Gray Metallic



Ingot Silver Metallic



Yellow Blaze Metallic Tri-coat

INTERIOR



Stone Cloth
Standard



Charcoal Black Cloth
Standard

Colors shown are representative only.
See your dealer for actual paint/trim options.

¹Additional charge.

V6 PREMIUM



17-in. Machined-Aluminum
Wheels with Painted Pockets
Standard



18-in. Sterling Gray Metallic Painted-
Aluminum Wheels included with
Mustang Club of America Edition



18-in. Polished-Aluminum Wheels
included with V6 Pony Package



19-in. Painted Machined-Aluminum
Wheels included with
V6 Performance Package



V6 Premium/Saddle Leather



V6 Premium/Coupe/Ingot Silver Metallic/V6 Pony Package

2011 **MUSTANG**

ford.com



Drive one.

V6 PREMIUM OPTIONAL FEATURES

Available Rapid Spec

Rapid Spec 201A – **Exterior Appearance Package** includes lower bodyside tape stripes and rear spoiler

Rapid Spec 202A – **V6 Pony Package** includes 18-in. polished-aluminum wheels, satin-chrome grille, body-color sideview mirrors, fog lamps, automatic headlamps, floor mats with embroidered Pony logo, lower bodyside tape stripe, and rear spoiler

Rapid Spec 203A – **Mustang Club of America Edition** includes painted dark stainless billet-style grille, lower fascia-mounted fog lamps, unique bodyside satin-black tape stripe, decklid tape appliqué, 18-in. Sterling Gray Metallic painted-aluminum wheels with P235/50R18 W-rated tires, premium carpeted floor mats, automatic headlamps, and rear spoiler

Available Options and Packages

3.31:1 gear ratio with limited-slip differential (coupe only)

6-speed automatic transmission

Comfort Package includes 6-way power front-passenger seat, and heated front seats

Electronics Package includes dual-zone electronic automatic temperature control, HD Radio™ and hard drive-based, voice-activated Navigation System, featuring about 10 gigabytes of digital storage for pictures and music; includes AM/FM stereo/single-CD/DVD, and MP3 capability

Glass roof (coupe only; not available with Stone interior)

HID headlamps (requires Security Package; not available with Rapid Spec 200A or 201A)

Rear view camera (not available with Rapid Spec 200A)

Security Package includes Active Anti-Theft System and wheel locks

Soft boot for convertible top

Tape stripe delete (not available with Rapid Spec 200A)

V6 Performance Package includes GT Coupe suspension, 3.31 limited-slip differential, unique electronic stability control (ESC) tuning, strut-tower brace, 19-in. painted machined-aluminum wheels and P255/40R19 summer-only tires (coupe manual only)

Exterior Colors	Interior Colors	Top Colors	Stripe Colors
Grabber Blue	●	▲	◇ ◆
Performance White	● ● ●	▲ ▲	◆ ◆
Kona Blue Metallic	● ● ●	▲ ▲	◇ ◆
Race Red	● ● ●	▲ ▲	◇ ◆
Red Candy Metallic Tinted Clearcoat ¹	● ● ●	▲ ▲	◇ ◆
Black	● ● ●	▲ ▲	◇ ◆
Sterling Gray Metallic	● ● ●	▲	◇ ◆
Ingot Silver Metallic	● ● ●	▲	◇ ² ◆
Yellow Blaze Metallic Tri-coat ¹	●	▲	◇ ◆

Interiors: ● Stone Leather ● Charcoal Black Leather ● Saddle Leather
Convertible Tops: ▲ Stone Vinyl ▲ Black Vinyl **Tape Stripes:** ◇ White ◆ Satin Black

MUSTANG V6 PREMIUM BODY STYLES



Coupe

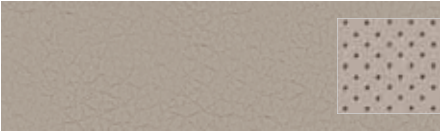


Glass Roof



Convertible

INTERIOR



Stone Leather
Standard



Charcoal Black Leather
Standard

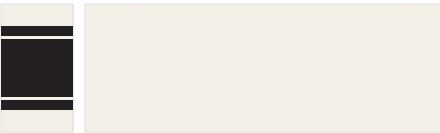


Saddle Leather
Standard

EXTERIOR



Grabber Blue



Performance White



Kona Blue Metallic



Race Red



Red Candy Metallic Tinted Clearcoat



Black



Sterling Gray Metallic



Ingot Silver Metallic



Yellow Blaze Metallic Tri-coat

Colors shown are representative only. See your dealer for actual paint/trim options.
¹Additional charge. ²Saddle Leather only.

GT



18-in. Wide-Spoke Painted-Aluminum Wheels
Standard



19-in. Dark Stainless Painted-Aluminum Wheels
included with Brembo Brake Package



GT/Charcoal Black Cloth



GT/Coupe/Red Candy Metallic Tinted Clearcoat

2011 MUSTANG

ford.com



Drive one.

GT OPTIONAL FEATURES

Available Options and Packages

3.55:1 gear ratio with limited-slip differential (manual transmission only)
3.73:1 gear ratio with limited-slip differential (manual transmission only)
6-speed automatic transmission with 3.15:1 gear ratio with limited-slip differential
Brembo™ Brake Package includes 14-in. Brembo vented front rotors with Brembo 4-piston calipers, 11.8-in. vented rear rotors with 2-piston calipers, unique electronic stability control (ESC) suspension tuning, and 19-in. dark stainless painted-aluminum wheels with P255/40R19 Z-rated summer-only performance tires (manual transmission only)
Security Package includes Active Anti-Theft System and wheel locks
Spoiler delete option

Exterior Colors	Interior Colors	Top Colors	Stripe Colors
Grabber Blue	●	▲	◇ ◆
Performance White	●	▲	◆
Kona Blue Metallic	●	▲	◇ ◆
Race Red	●	▲	◇ ◆
Red Candy Metallic Tinted Clearcoat¹	●	▲	◇ ◆
Black	●	▲	◇ ◆
Sterling Gray Metallic	●	▲	◇ ◆
Ingot Silver Metallic	●	▲	◆
Yellow Blaze Metallic Tri-coat¹	●	▲	◇ ◆

Interiors: ● Stone Cloth ● Charcoal Black Cloth **Convertible Tops:** ▲ Stone Vinyl ▲ Black Vinyl
Tape Stripes: ◇ White ◆ Satin Black

MUSTANG GT BODY STYLES



Coupe

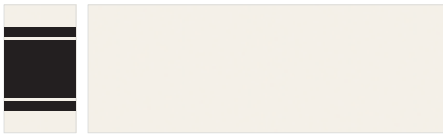


Convertible

EXTERIOR



Grabber Blue



Performance White



Kona Blue Metallic



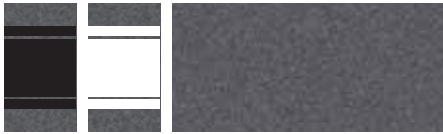
Race Red



Red Candy Metallic Tinted Clearcoat



Black



Sterling Gray Metallic



Ingot Silver Metallic



Yellow Blaze Metallic Tri-coat

INTERIOR



Stone Cloth
Standard



Charcoal Black Cloth
Standard

Colors shown are representative only. See your dealer for actual paint/trim options.
¹Additional charge.

GT PREMIUM

INTERIOR



Stone Leather
Standard



Charcoal Black Leather
Standard



Saddle Leather
Standard



Charcoal Black Leather with Carbon Insert
California Special Edition

Available Premier Trim With Color Accent Package



Brick Red Leather
with Cashmere-Colored Racing Stripe



Charcoal Black Leather
with Grabber Blue Racing Stripe



Charcoal Black Leather
with Cashmere-Colored Racing Stripe



GT Premium/Charcoal Black Leather/
Cashmere-Colored Racing Stripe/Premier Trim With Color Accent Package



GT Premium/Convertible/Grabber Blue/California Special Edition

MUSTANG GT PREMIUM BODY STYLES



Coupe



Glass Roof



Convertible

2011 **MUSTANG**

ford.com



Drive one.

GT PREMIUM OPTIONAL FEATURES

Available Rapid Spec

Rapid Spec 401A – **Premier Trim With Color Accent Package** includes Charcoal Black interior environment with color-accented seats, unique door trim with bright Pony badge, aluminum shift knob and dark-aluminum instrument panel

Rapid Spec 402A – **California Special Edition** includes unique chrome billet-style grille with body-color surround, unique lower fascias with fog lamps, 19-in. argent painted machined-aluminum wheels with P245/45R19 tires, GT/CS side stripes, unique decklid badge with name in faux gas cap, unique instrument panel finish, carbon door-panel inserts, leather-trimmed seats with Carbon inserts, premium carpeted front floor mats with embroidered logo, rear lower fascia insert, pedestal rear spoiler, decklid tape appliqué, and side scoops

Available Options and Packages

18-in. polished-aluminum wheels

19-in. bright machined-aluminum wheels

19-in. premium painted Luster-Nickel aluminum wheels

3.55:1 gear ratio with limited-slip differential (manual transmission only)

3.73:1 gear ratio with limited-slip differential (manual transmission only)

6-speed automatic transmission with 3.15:1 gear ratio with limited-slip differential

Brembo™ Brake Package includes 14-in. Brembo vented front rotors with Brembo 4-piston calipers, 11.8-in. vented rear rotors with 2-piston calipers, unique electronic stability control (ESC) suspension tuning, and 19-in. dark stainless painted-aluminum wheels with P255/40R19 summer-only performance tires (manual only; not available with Rapid Spec 402A)

Comfort Package includes 6-way power front-passenger seat, and heated front seats

Electronics Package includes dual-zone electronic automatic temperature control, HD Radio™ and hard drive-based, voice-activated Navigation System, featuring about 10 gigabytes of digital storage for pictures and music; includes AM/FM stereo/single-CD/DVD, and MP3 capability

Glass roof (coupe only; not available with Stone interior)

HID headlamps (requires Security Package)

Rear view camera (not available with Rapid Spec 402A)

Security Package includes Active Anti-Theft System and wheel locks

Shaker™ 1000 Audio System with AM/FM stereo/single-CD player with MP3 capability, 10 speakers and 1,000 watts (not available with Electronics Package)

Spoiler delete option

Exterior Colors	Interior Colors	Premier Trim Colors	Top Colors	Stripe Colors
Grabber Blue	●	■ ■ ■ ■	▲	◇ ◆
Performance White	● ● ●	■ ■ ■ ■	▲	◆
Kona Blue Metallic	● ● ●	■ ■ ■ ■	▲	◇ ◆
Race Red	● ● ●	■ ■ ■ ■	▲	◇ ◆
Red Candy Metallic Tinted Clearcoat ¹	● ● ●	■ ■ ■ ■	▲	◇ ◆
Black	● ● ●	■ ■ ■ ■	▲	◇ ◆
Sterling Gray Metallic	● ● ●	■ ■ ■ ■	▲	◇ ◆
Ingot Silver Metallic	● ● ●	■ ■ ■ ■	▲	◇ ◆
Yellow Blaze Metallic Tri-coat ¹	●	■	▲	◇ ◆

Interiors: ● Stone Leather ● Charcoal Black Leather ● Saddle Leather ■ Charcoal Black Leather with Carbon Insert ■ Brick Red Leather with Cashmere-Colored Stripe ■ Charcoal Black Leather with Grabber Blue Stripe ■ Charcoal Black Leather with Cashmere-Colored Stripe

Convertible Top: ▲ Black Cloth **Tape Stripes:** ◇ White ◆ Satin Black



18-in. Wide-Spoke Painted-Aluminum Wheels Standard



18-in. Polished-Aluminum Wheels Optional



19-in. Bright Machined-Aluminum Wheels Optional



19-in. Premium Painted Luster-Nickel Aluminum Wheels Optional



19-in. Argent Painted Machined-Aluminum Wheels included with California Special

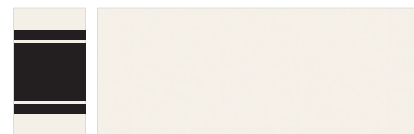


19-in. Dark Stainless Painted-Aluminum Wheels included with Brembo Brake Package

EXTERIOR



Grabber Blue



Performance White



Kona Blue Metallic



Race Red



Red Candy Metallic Tinted Clearcoat



Black



Sterling Gray Metallic



Ingot Silver Metallic



Yellow Blaze Metallic Tri-coat

Colors shown are representative only. See your dealer for actual paint/trim options.
¹Additional charge.

2011 MUSTANG

ford.com



SHELBY GT500™

INTERIOR



Charcoal Black Leather
with White Racing Stripes



Charcoal Black Leather
with Silver Racing Stripes



Charcoal Black Leather
with Grabber Blue Racing Stripes



Charcoal Black Leather
with Red Racing Stripes



Charcoal Black Leather
with Black Racing Stripes¹



Shelby GT500/Charcoal Black Leather/Silver Racing Stripes

SHELBY GT500 BODY STYLES



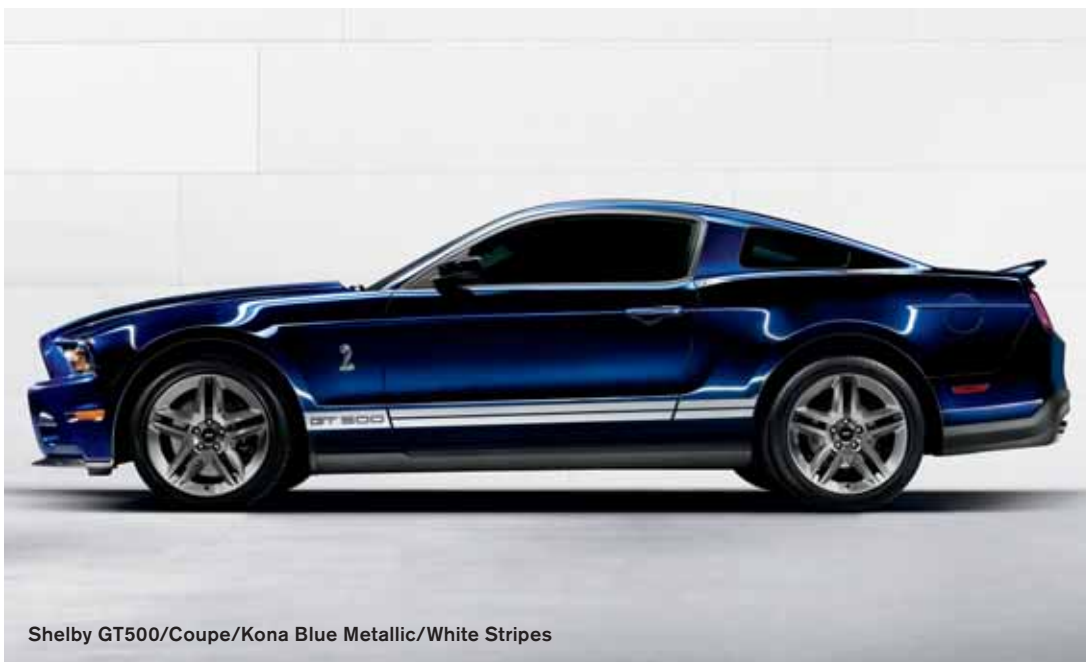
Coupe



Glass Roof



Convertible



Shelby GT500/Coupe/Kona Blue Metallic/White Stripes

¹Standard with tape stripe delete.

2011 **MUSTANG**

ford.com



Drive one.

SHELBY GT500™ OPTIONAL FEATURES

Available Options and Packages

Electronics Package includes dual-zone electronic automatic temperature control, HD Radio™ and hard drive-based, voice-activated Navigation System, featuring about 10 gigabytes of digital storage for pictures and music; includes AM/FM stereo/single-CD/DVD, and MP3 capability

Glass roof (coupe only)

Shaker™ 1000 Audio System with AM/FM stereo/single-CD player with MP3 capability, 10 speakers and 1,000 watts (not available with Electronics Package)

SVT Performance Package includes 3.73 gear ratio with limited-slip differential, 19-in. x 9.5-in. painted, forged-aluminum wheels with P265/40R19 front tires, 20-in. x 9.5-in. painted, forged-aluminum wheels with P285/35R20 rear tires, unique front and rear springs, unique rear shocks, unique shift knob, unique Shelby stripes, unique bodyside stripes, unique spoiler with Gurney Flap, and under-belly aerodynamic shield

Tape stripe delete (standard with Charcoal Black leather seats with Black racing stripes)

Exterior Colors

Exterior Colors	Interior Colors				SVT Performance Package Stripes ¹	
Grabber Blue	■		■	■	◇	
Performance White		■	■	■		◆
Kona Blue Metallic	■	■		■		◆
Race Red	■	■		■	◇	
Black	■	■	■	■		◆
Sterling Gray Metallic		■		■		◆
Ingot Silver Metallic				■		◆

Interiors: ■ Charcoal Black Leather with White Racing Stripes ■ Charcoal Black Leather with Silver Racing Stripes
 ■ Charcoal Black Leather with Grabber Blue Racing Stripes ■ Charcoal Black Leather with Red Racing Stripes
 ■ Charcoal Black Leather with Black Racing Stripes

SVT Performance Stripes: ◇ White with Black Accent ◆ Red with Black Accent ◆ Red with Silver Accent



19-in. x 9.5-in. Premium Painted-Aluminum
Wheels with P255/40R19 Front
and P285/35R19 Rear Tires
Standard

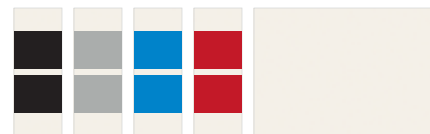


19-in. x 9.5-in. Painted, Forged-Aluminum
Wheels with P265/40R19 Front and
20-in. x 9.5-in. Painted, Forged-Aluminum
Wheels with P285/35R20 Rear Tires
available with SVT Performance Package

EXTERIOR



Grabber Blue



Performance White



Kona Blue Metallic



Race Red



Black

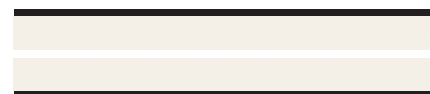


Sterling Gray Metallic



Ingot Silver Metallic

SVT PERFORMANCE PACKAGE STRIPES



White with Black Accent



Red with Black Accent



Red with Silver Accent

Colors shown are representative only. See your dealer for actual paint/trim options.

¹When ordered with Charcoal Black leather with Black racing stripes includes tape stripe delete.

2011 MUSTANG

ford.com



Drive one.

Elements

More tech. Further proof Mustang offers more than muscle.



A

A | HID HEADLAMPS¹ emit approximately 2½ times as much light as the conventional versions. A special quartz bulb generates a penetrating, bluish-white light.



B

B | EASY FUEL[®] CAPLESS FUEL FILLER originated at the race track. Fill-ups are made simpler – no screw-on cap to tighten, loosen or lose. The system self-seals to protect against dust, water, snow and ice.



C

C | BLIND SPOT MIRRORS are built into each sideview mirror. They're convex, reflecting the image of approaching vehicles as they enter your blind spots.



D

D | ADVANCETRAC[®] electronic stability control² keeps you in control. And on track. It works in conjunction with the four-wheel disc ABS and all-speed traction control.

HD RADIO[™] makes for crystal-clear, digital listening. Pumping out FM audio with near-CD quality. And giving AM an FM sound – no static at all. In addition, you get innovative FM programming (new HD2/HD3 channels) along with on-screen data: song, artist, breaking news, weather alerts, sports scores and more. Even better, HD Radio is subscription-free.

BREMBO[™] BRAKE PACKAGE¹ includes the high-performance stopping power of 14-in. Brembo vented front rotors. Teamed with Brembo four-piston calipers. Brembo is a world leader for braking systems – be it for street or racing circuit.



¹Available. ²Remember that even advanced technology cannot overcome the laws of physics. It's always possible to lose control of a vehicle due to inappropriate driver input for the conditions.

2011 MUSTANG

ford.com



Accessories

Detailed. Tested. Warranted. For enhanced looks. Or enhanced function.



Pedestal Rear Spoiler and Quarter Window Louvers



Chrome Billet-Style Grille and Front Lower Fascia



Rear Lower Fascia – Diffuser-Style



20-in. Chrome Wheel¹



18-in. Painted Dark Shadow Gray Wheel



18-in. 5-Spoke Chrome Wheel



19-in. Painted Foundry Black GT Wheel¹



Side Scoops



Remote Start System



All-Weather Floor Mats

Also available:

APPEARANCE

Grilles
Body Kit by 3dCarbon^{®2}
Hood Scoop
Ford Custom Graphics by Original Wraps,[™] Inc.²
Decklid Panels (V6, GT or GT500[®])
Over-the-Top Racing Stripes
Rear Spoilers

ELECTRONICS

Forward or Reverse Bumper-Mounted Parking Assist System by EchoMaster^{®2}
GPS Tracking and Recovery by SmartAlert^{™2}
Portable Navigation Systems by Garmin^{®2}
Vehicle Security System
Keyless Entry Keypad
Illuminated Gear Indicator Shift Knobs by Gaslock^{®3}

EXTERIOR

Convertible Hard Tonneau Cover²
Hood Deflector
Side Window Deflectors
Splash Guards
Locking Fuel Plug
Full Vehicle Covers
Front End Covers

INTERIOR

Soft Cargo Organizers (Large and Standard Sizes)
Interior Soft Cargo Cooler Bag
Cargo Area Protector (with and without Subwoofers)
Cargo Net
Premium Carpeted Floor Mats
Sport Pedals
Illuminated Door Sill Plates
Interior Lighting Kit
Ash Cup/Coin Holder with or without Lighter Element
Auto-Dimming Rearview Mirror

WHEELS

Wheel Locks



Hood and Side Stripes

To learn more about Ford Custom Accessories and to shop online, visit fordaccessories.com.

Genuine Ford Accessories will be warranted for whichever provides you the greatest benefit: 12 months or 12,000 miles (whichever occurs first), or the remainder of your Bumper-to-Bumper 3-year/36,000-mile New Vehicle Limited Warranty. Contact your local Ford Dealer for details and a copy of the limited warranty. Ford Licensed Accessories (FLA) are warranted by the accessory manufacturer's warranty. Ford Licensed Accessories are fully designed and developed by the accessory manufacturer and have not been designed or tested to Ford Motor Company engineering requirements. Contact your Ford Dealer for details regarding the manufacturer's limited warranty and/or a copy of the FLA product limited warranty offered by the accessory manufacturer.

¹Vehicle application and restrictions apply. See dealer for details. ²Ford Licensed Accessories. ³Only available on manual transmission-equipped vehicles. SmartAlert is a registered trademark of Inilex, Inc. Garmin is a registered trademark of Garmin Ltd.

custom
accessories



2011 MUSTANG

ford.com



Drive one.